



BEACONSFIELD

Tout sur les pompes de puisard !

All about sump pumps!



Aménagement urbain
Urban Planning

Novembre 2022

DISCLAIMER



The City of Beaconsfield is providing this information as a guideline and it should never take precedence over the advice of qualified professionals in the field.

Notwithstanding the foregoing, compliance with the By-laws is mandatory.

The City is not responsible for any damage or breakage that may occur when handling facilities or equipment on private property.



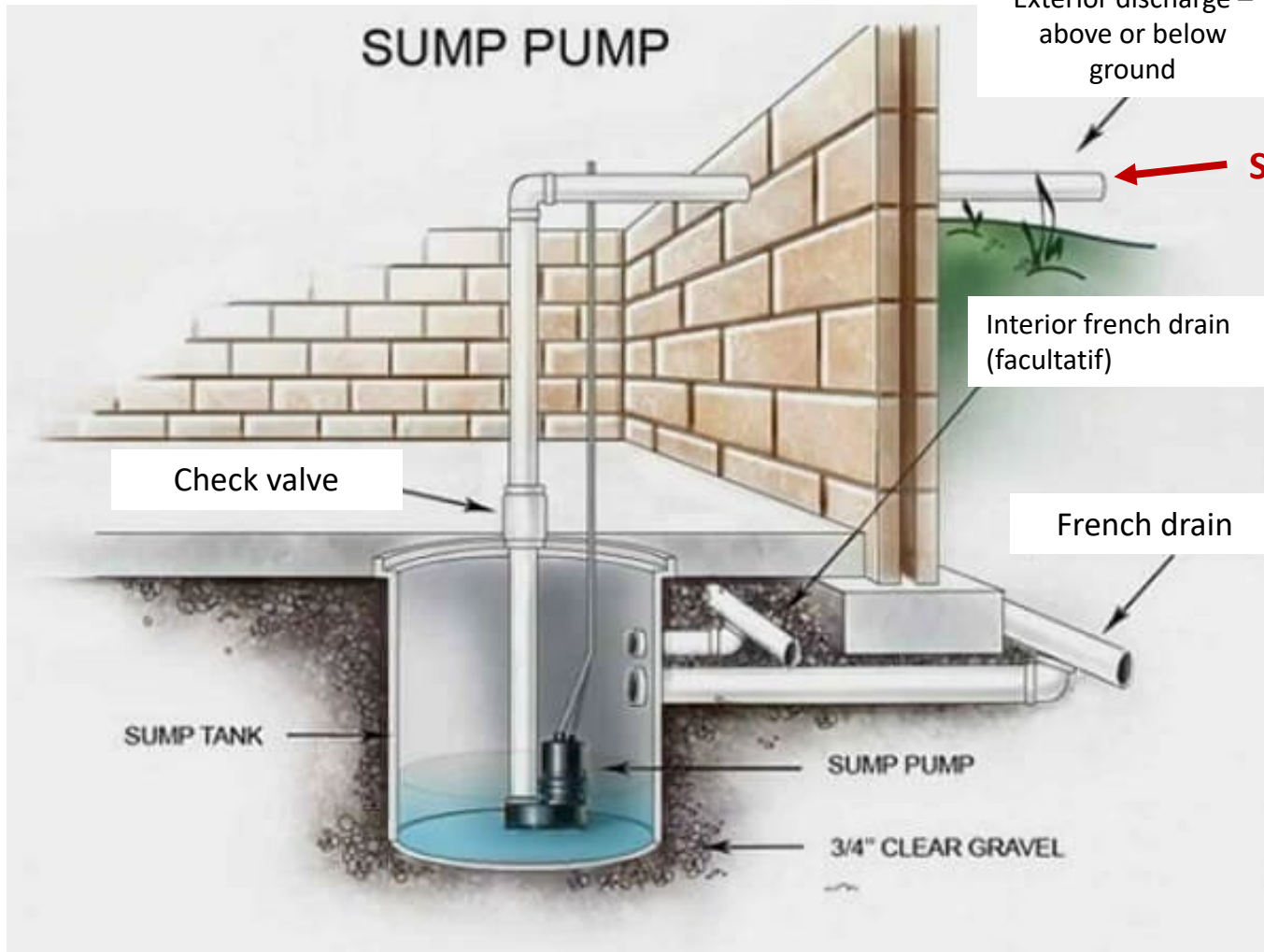
Agenda



- 1 Operation
- 2 Different types
- 3 Municipal By-law
- 4 Maintenance
- 5 Tips



1. Operation



Source: SquareOne

2. Different types



Submersible pump



Column Sump
pump



Water powered
sump pump



3. Municipal By-law



Construction By-law Beac-046

3.2.8 Surface drainage

Adequate surface water drainage shall be provided on each landsite. Taking into consideration the natural topography, surface water shall be directed towards municipal ditches or the storm drainage system.

All exterior foundation walls and slabs on the ground shall be drained by drainage pipes laid outside of the walls or under the slab. The top and sides of all drainage pipes shall be covered by at least fifteen (15) centimetres of crushed stone. These pipes shall drain into a covered sump pit and the water shall be directed toward the street drainage ditch.

Where gravity drainage is not possible, an automatic sump pump shall be provided in the sump pit and it shall drain toward the street to an open ditch or a storm sewer.

Sump pits and sump pumps shall not be connected to the street sanitary sewer system.

4. Maintenance



1. KNOW YOUR SUMP PUMP!

When was it installed?

Lifespan – 10 to 15 year, depending on the manufacturer

What is it's type?

Is it permitted? – Water powered pump are forbidden

Whats is it's brand?

Are there any recalls? Should some piece be changed or added?

Where does it drain?

Ditch? Storm sewer? Sanitary sewer?



4. Maintenance

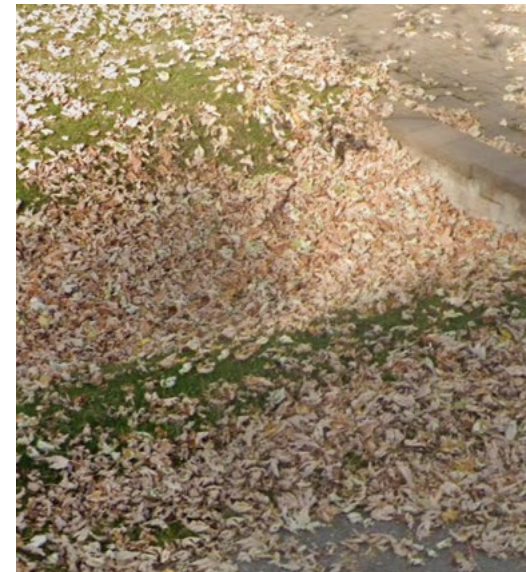
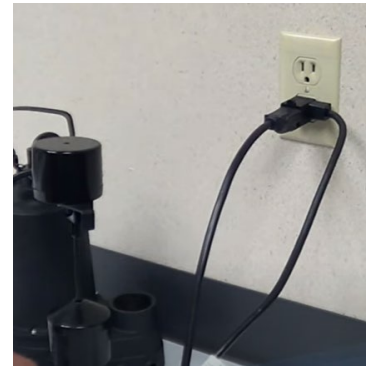
2. VISUAL INSPECTION

Inside:

- Is there any water around the pit?
- Does the electrical cable work and is it in good condition?

Outside:

- Is there any debris, dirt or sediment blocking the outlet?
- Does the water flow well, it drains?



4. Maintenance



3. TEST IT

On a regular basis

The pump should always be active

Always test it with water!

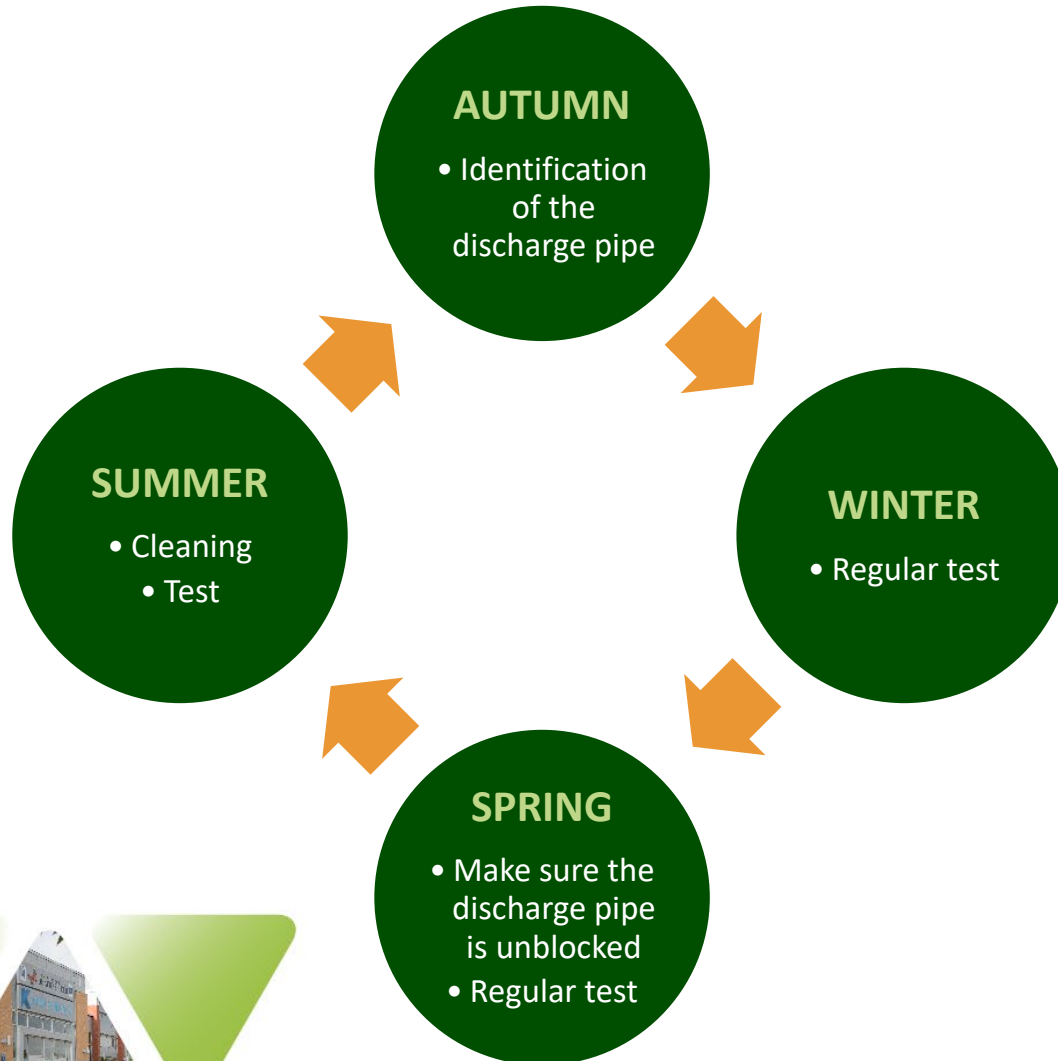
Make sure the preventive equipment are working



4. Maintenance



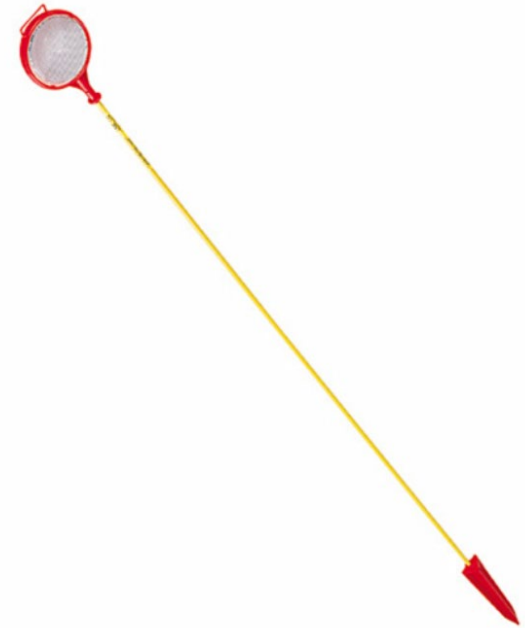
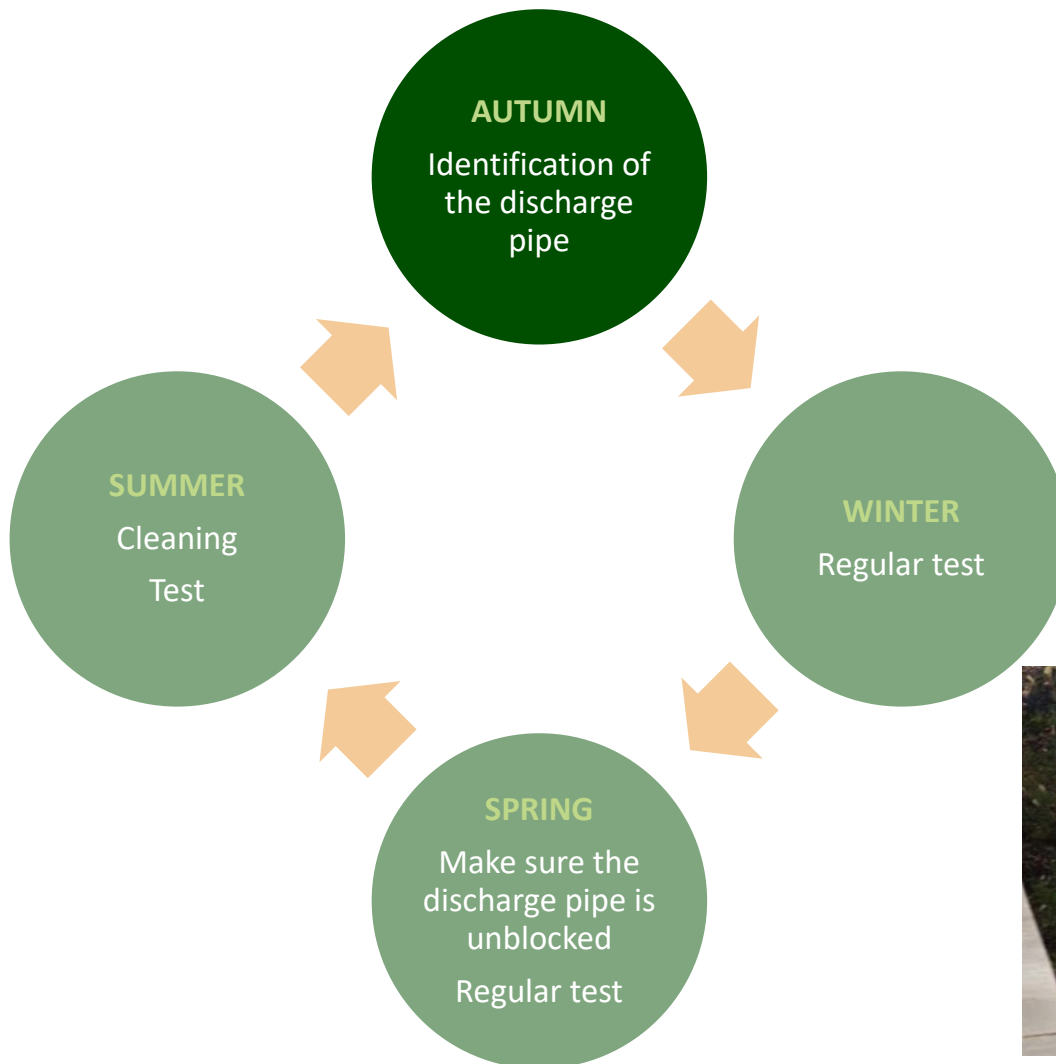
4. SEASONAL INSPECTION AND MAINTENANCE



4. Maintenance



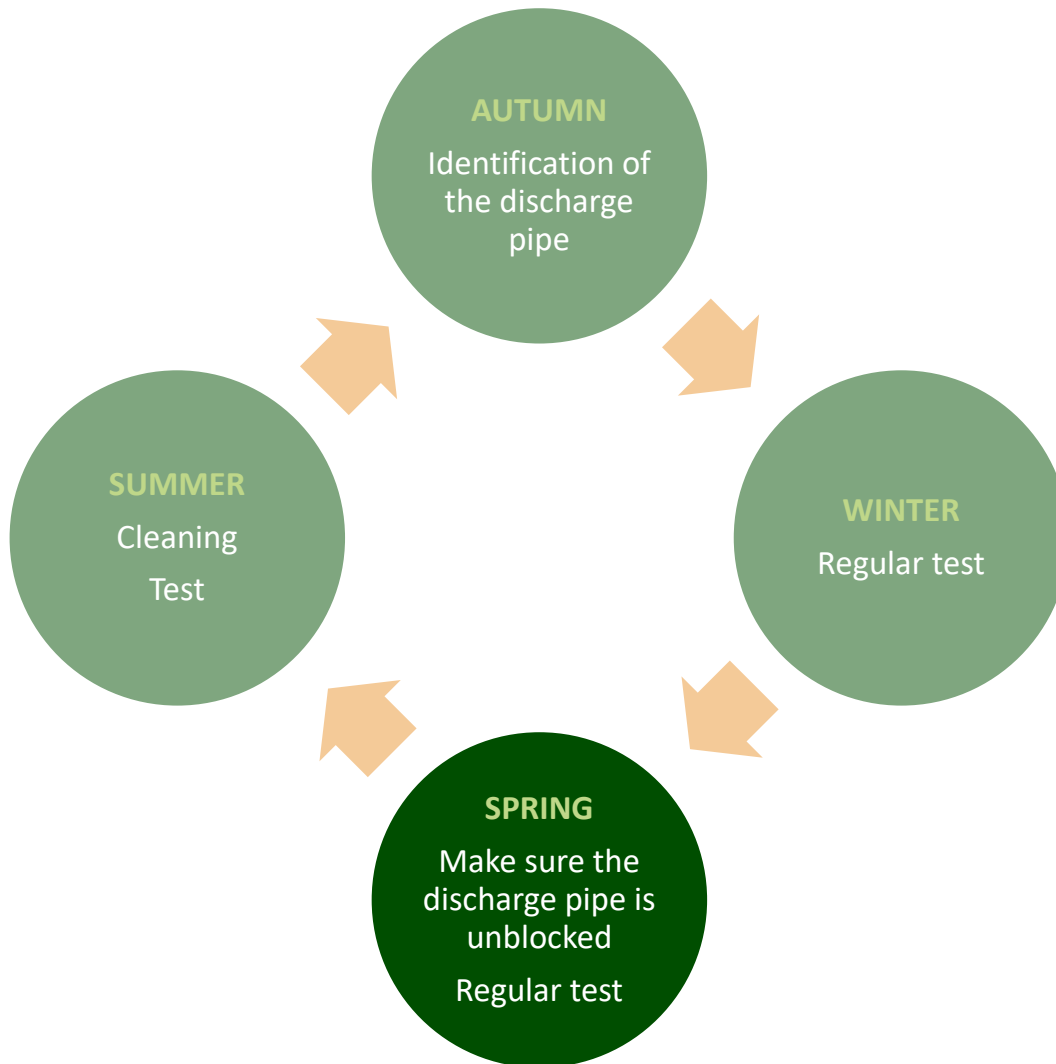
4. SEASONAL INSPECTION AND MAINTENANCE



4. Maintenance



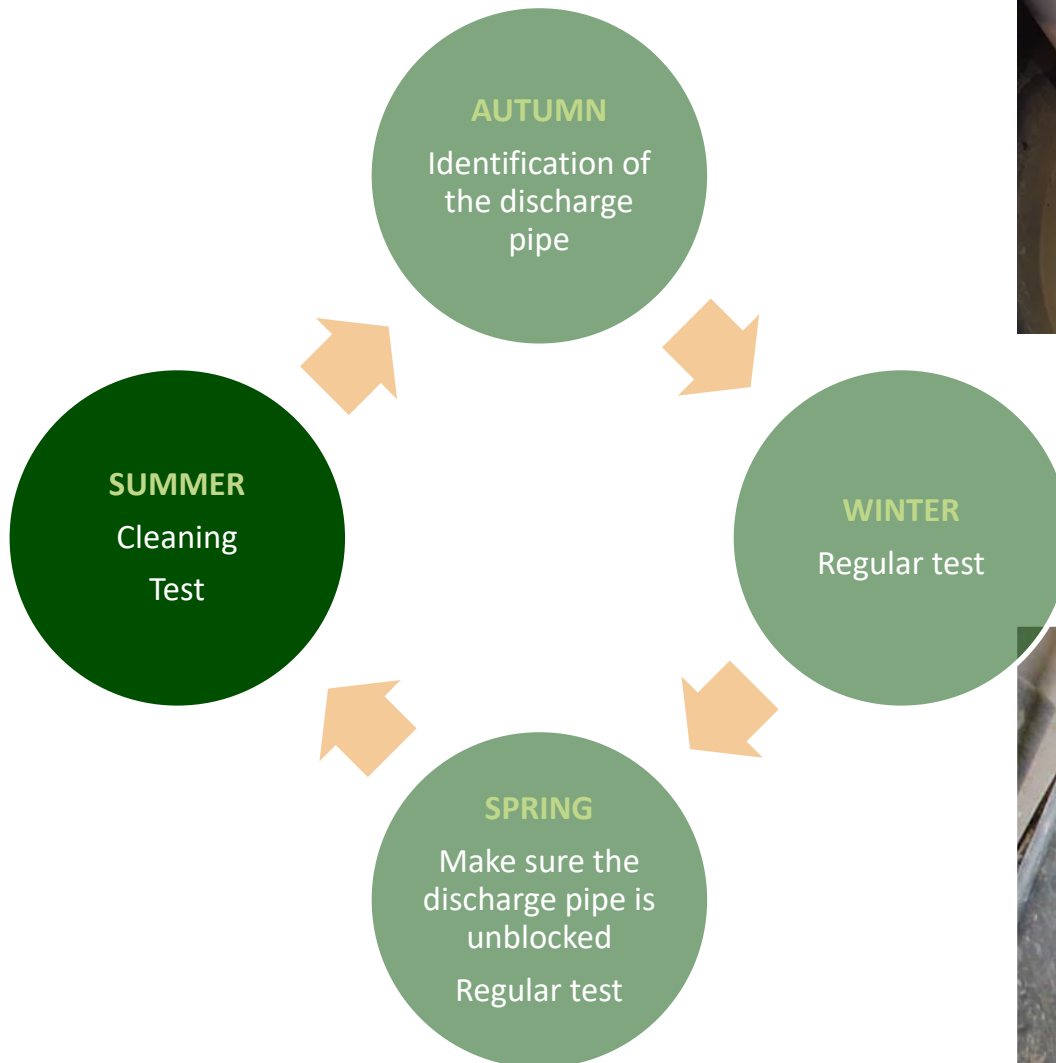
4. INSPECTIONS ET ENTRETIEN SAISONNIER



4. Maintenance



4. INSPECTIONS ET ENTRETIEN SAISONNIER



4. Maintenance



5. PREVENTIVE MEASURES

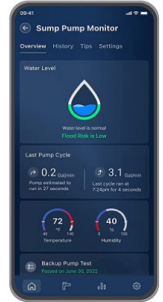
Alarm

- When triggered (A)
- On high level (B) :
 - Triggered when water reaches it
 - Can be WiFi
 - Requires manual action

A



B



C



Battery Pack (C)

- Check regularly
- Can be WiFi
- Can be combined with alarm

Generator

- Needs activation



BEACONSFIELD

5. Tips



MAKE SURE YOUR HOME IS RESILIENT TO TO CLIMATE CHANGE

Basement flooding, in particular, can come from other sources

1. Keep water away from the foundation

Gutters, curbs, rain barrels

2. Encourage water retention

On your property, with permeable landscaping

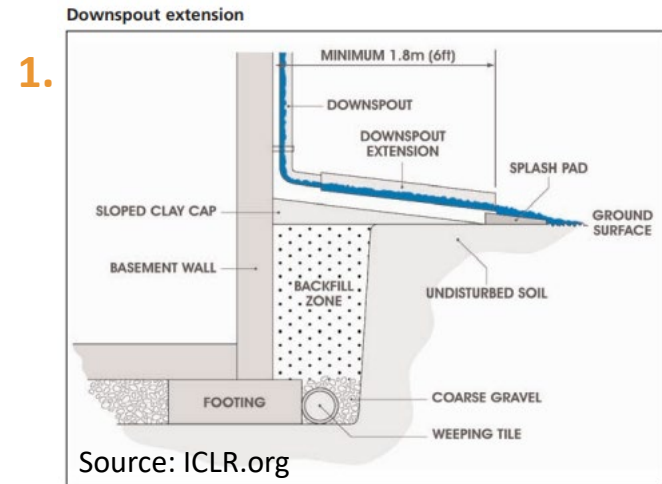
3. Make sure piping is adequate and functional

Drains, valves, appliances

4. Waterproofing the foundation

French drain, membrane, repairs

Source: ÉcoHabitation



4.



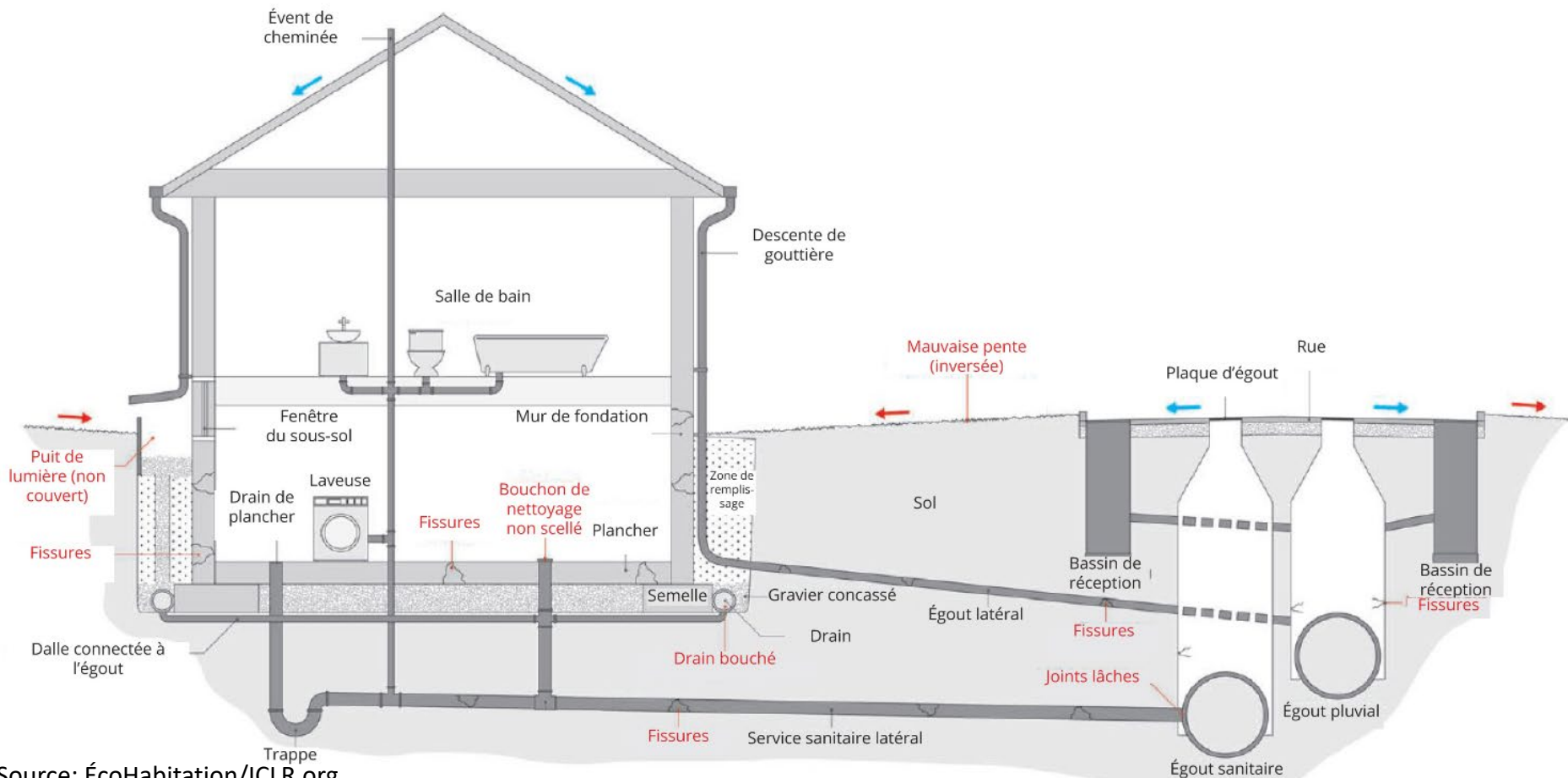
Source: ÉcoHabitation

5. Tips



MAKE SURE YOUR HOME IS RESILIENT TO TO CLIMATE CHANGE

Infiltration, ruissellement, refoulement des égouts
CAUSES D'UNE INONDATION DANS UN SOUS-SOL

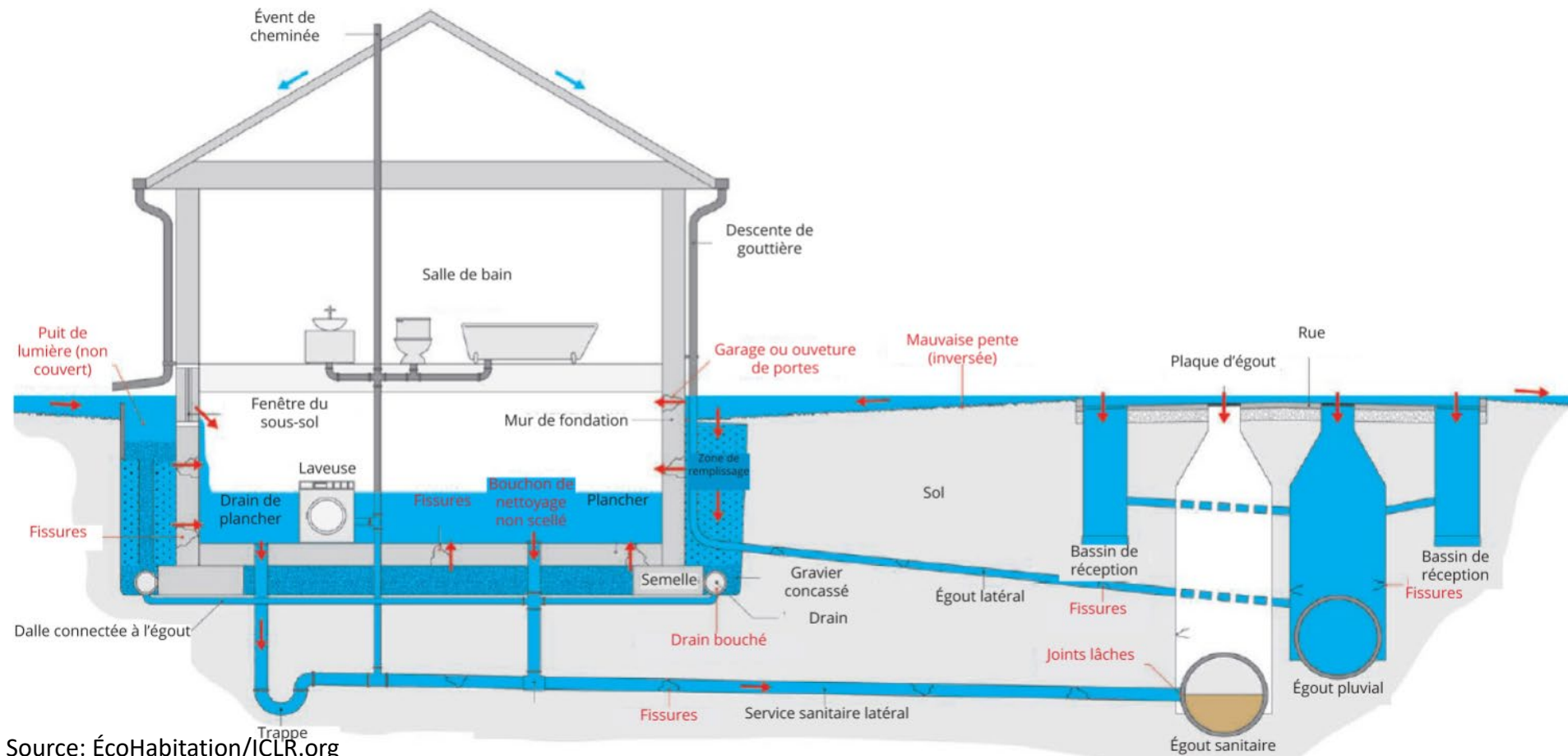


Four green triangles arranged horizontally. The first triangle contains a photograph of a two-story house with a lawn. The second triangle is solid green. The third triangle contains a photograph of a modern building with a covered walkway. The fourth triangle is solid green.

MAKE SURE YOUR HOME IS RESILIENT TO TO CLIMATE CHANGE

Infiltration, ruissellement, refoulement des égouts

EFFETS D'UNE INONDATION MASSIVE PROVENANT DE L'EXTÉRIEUR DANS UN SOUS-SOL



Source: ÉcoHabitation/ICLR.org

Questions?



BEACONSFIELD